



## ACCESSIBILITY GUIDE

Welcome to **Savoy Central Hotel Apartments**.

We want every guest to have a comfortable, safe, and enjoyable stay. This guide provides information about accessibility features at our property and how we can assist you during your visit.

---

### 1. Arrival and Parking

- Accessible parking: Yes. 3 spaces at Ground Floor Level.
  - Distance to entrance: 3 m.
  - Pathway: Step-free
- 

### 2. Entrance and Reception

- Main entrance: At Ground Level (Manual door, step-free access, bright lighting)
  - Reception area: Sit-down check-in will be done for People of Determination. Reception to sit in the lobby area with the guest.
  - Assistance available: 24-hours
- 

### 3. Elevators and Floor Corridors

- Elevators: B, GF, Level 1 to Level 8.
    - Elevator floor area size: 110 cm x 137 cm
    - Elevator door width size: 80 cm when open
  - Floor Corridors: 173 cm width, carpeted surface, bright light with no obstacles
- 

### 4. Accessible Guest Rooms

- Number of accessible rooms: 2 rooms close to the elevators (Room no.101 & Room no. 112).
  - Room type: Studio on Non-Smoking Floor (2-units on Level 1).
  - Features:
    - Step-free entry
    - Door width - 91 cm when open
    - Lower switches – 142 cm height and bed-side 72 cm.
    - Roll-in shower
    - Grab rails
-



## 5. Bathrooms

- Accessible bathroom details: Wheelchair-accessible, roll-in shower, grab bars, shower seat, height of bathroom sink from floor -80 cm, emergency bell button, emergency phone available
- 

## 6. Public Areas

- Restaurant / breakfast area: Accessible route, table height – 77 cm
  - Lounge spaces: low sofa-seating, bright light, marble-tiled floor surface
  - Gym & Pool on Rooftop Level 8 with assistance provided for People of Determination.
- 

## 7. Emergency Information

- Accessible emergency exits: Assistance provided for People of Determination.
  - Assistance procedure:
    - 2 Emergency Response Team members will physically contact the guest and assist in safely evacuating the guest from the building to the Fire Assembly Point.
- 

## 8. Contact Us

If you have any accessibility needs or questions before or during your stay, please contact us:

- Phone: +9714 393 8000
  - Email: [central@savoydubai.ae](mailto:central@savoydubai.ae)
  - Reception hours: 24-hours
-

**ACCESSIBILITY GUIDE - IMAGES**

**SAVOY CENTRAL**

**Arrival & Parking**



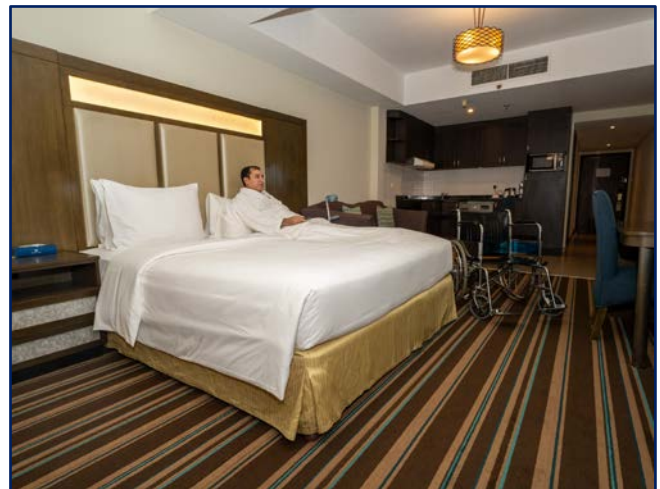
**Entrance and Reception**



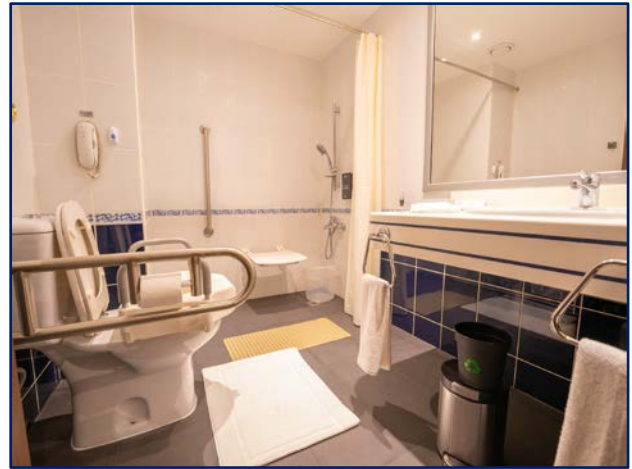
**Elevators and Floor Corridors**



**Accessible Guest Rooms**



**Accessible Guest Bathrooms**



**Public Areas**

